

Thermo Fisher Scientific launches TopoMAPS software for SEM image analysis

New software is powered by Digital Surf's Mountains® software platform

Besançon, France — Digital Surf is proud to announce that TopoMAPS software for SEM image enhancement, 3D reconstruction and metrology is now available on Thermo Scientific SEM and DualBeam systems.

TopoMAPS feature highlights include:

- **SEM image colorization made easy**

from black and white to color in just a few clicks.

- **3D reconstruction of surface topography**

from two images at different tilt angles or tilt-free reconstruction using images from the Directional BackScatter detector (DBS).

- **Topography measurements**

(distances, step heights etc.) **and characterization of surface texture.**

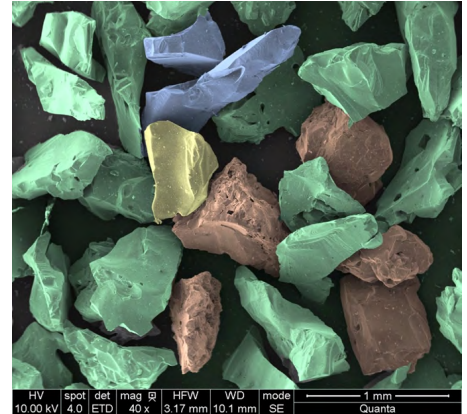
Users will also benefit from TopoMAPS easy-to-use interface including: user-friendly ribbon with intuitive icon-based tools, quick report generation and automatic analysis routines, ideal for speeding up production.

TopoMAPS works with all Thermo Scientific scanning electron microscopes (SEMs) and DualBeam (focused ion beam/SEM) systems. The new software is an ideal solution for analyzing data in various fields of industry and science.

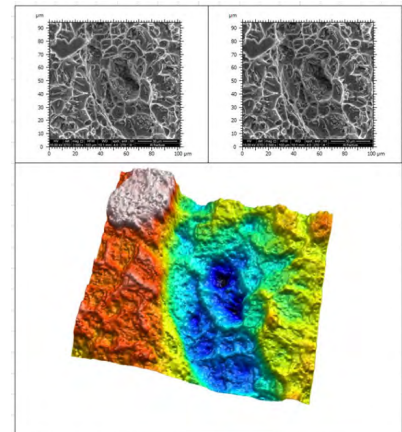
Applications include: wear analysis • quality control • soil & rock testing • materials characterization • semiconductor inspection • biological studies etc.

"We are excited to partner with Digital Surf and give our customers access to new TopoMAPS software based on Mountains® technology. This will open up exciting possibilities for researchers and engineers using Thermo Fisher Scientific's revolutionary scanning electron microscopy (SEM) solutions" said Trisha Rice, vice president and general manager, materials science, Thermo Fisher Scientific.

"Thermo Fisher Scientific is a leading provider of electron microscopy solutions for materials and life sciences and the semiconductor industry. We are happy to provide our software on their SEMs and DualBeams and potentially extend our rapidly growing reputation as provider of innovative, comprehensive solutions for SEM image analysis" stated Christophe Mignot, CEO of Digital Surf.



Colorization of a SEM image
using TopoMAPS software



3D reconstruction of a sample
from two SEM images

Read more about TopoMAPS:
www.fei.com/software/topomaps-for-materials-science

About Thermo Fisher Scientific

Thermo Fisher Scientific Inc. is the world leader in serving science, with revenues of \$18 billion and more than 55,000 employees globally. The company's main focus is helping customers accelerate life sciences research, solve complex analytical challenges, improve patient diagnostics and increase laboratory productivity.

For more information, please visit www.thermofisher.com.

About Digital Surf

Digital Surf is the editor of Mountains® surface metrology and image analysis software for profilers and microscopes, integrated by leading instrument manufacturers worldwide. For more information, please visit www.digitalsurf.com

Contact: Clare Jamet
Phone: +33 3 81 50 48 00
Email: cjamet@digitalsurf.fr
www.digitalsurf.com